

# Micromotor handpieces



Tecnomed's micromotor handpieces are ergonomically designed and offer a perfect balance, not only of the handpiece alone but of the complete handpiece and cord system. Because they do not pull on your wrist, your working position can be more relaxed and natural and you can concentrate better on the intricate, complex and time-consuming tasks you often have to perform. Maintenance is effortless too, thanks to an easy to clean spindle and quick to replace bearings. Excellent speed control, mechanical robustness and ergonomic design are just some of the key features of these handpieces. They are also fully interchangeable and can be used with any dental unit that provides the right output voltage. The choice is yours!

# Data sheet



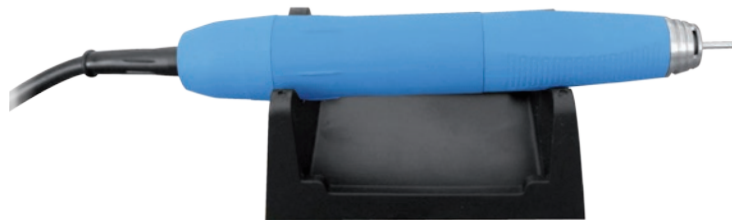
Compatible with Sirio®, Silfradent®, Mariotti®, NSK®, Seashin® and Marathon®\* control units.

<b>Product code</b>	<b>MX900</b>
Micromotor handpiece	Brush
Maximum speed	35.000 rpm
Power supply	0-30 VDC
Handpiece length	154,5 mm
Handpiece diameter	29,4 mm
Handpiece weight	240 gr
Bur diameter	2,35 mm



Compatible con Sirio®, Silfradent®, Mariotti®, NSK®, Seashin® and Marathon®\* control units.

<b>Product code</b>	<b>MX940</b>
Micromotor handpiece	Brush
Maximum speed	40.000 rpm
Power supply	0-32 VDC
Handpiece length	154,5 mm
Handpiece diameter	29,4 mm
Handpiece weight	282 gr
Bur diameter	2,35 mm



Compatible with brushless motor control units\*.

<b>Product code</b>	<b>MX950</b>
Micromotor handpiece	Brushless
Maximum speed	50.000 rpm
Handpiece length	162 mm
Handpiece diameter	26 mm
Handpiece weight	358 gr
Bur diameter	2,35 mm

\* In some cases it may be necessary to change the micromotor handpiece connector.